

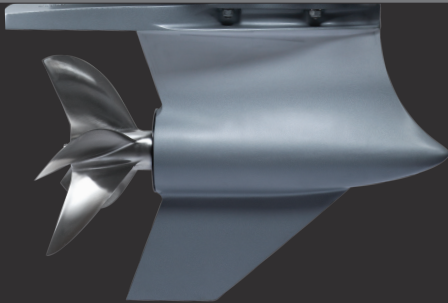


MERCURY
RACING

RACE OFFSHORE COMPETITION OUTBOARD

POWERHEAD

- Most powerful competition outboard ever produced by Mercury Racing®.
- Water cooled supercharger reduces intake temperatures for maximum power and performance.
- Electronic knock control ensures maximum engine performance in response to fuel grade and ambient conditions.
- Remote dry sump system maintains steady lubrication during extended high G cornering.
- Structural upgrades incorporated into the 2.6L cylinder block and head ensure classic Verado® durability, even on the enduring offshore race circuit.
- SmartCraft® Digital Throttle & Shift® provide for an exceptionally smooth and responsive driving experience.

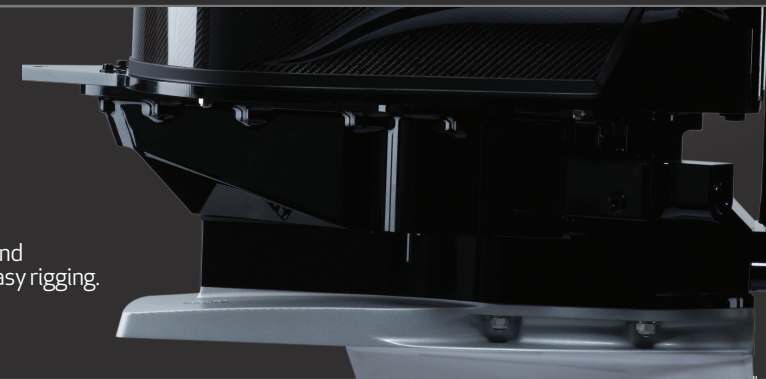


SPORT MASTER GEARCASE & CUSTOM CNC PROPS

- Race-proven Sport Master gearcase for enhanced boat handling, speed and efficiency.
- Custom short shaft models in both right and left hand rotation.
- All new five and six-blade CNC cleaver propellers designed specifically for the ROS.
- Props available in 13, 15, 18 or 21 degree rake and a variety of pitch sizes for precision matching of engine to hull for maximum efficiency and performance.

15" CUSTOM MIDSECTION

- Custom designed at Mercury Racing, the competition midsection lowers the engine's center of gravity for enhanced handling particularly when powering into and out of turns as well as over all boat performance at race speeds.
- High performance solid engine mounts, designed in conjunction with Mercury Racing's exclusive midsection, provide the best combination of handling and overall boat performance.
- Machined out of solid billet aluminum for ultimate durability.
- Robust swivel clamp bracket designed to endure the harsh environment of offshore powerboat racing.
- Custom powerhead mount plate features integrated tie bar and steering cylinder mount points for enhanced durability and easy rigging.





STYLING

- Bold new ROS graphics customized with XCAT logo and color scheme.
- A lightweight, carbon fiber lower cowl conceals the transition of powerhead to midsection.
- Dual rigging tubes facilitate rigging of external systems.

SPECIFICATION

RACE OFFSHORE

| | |
|---|--|
| Propshaft Rated Horsepower >Kilowatts (kW) | 400 298 |
| Max RPM at Full Throttle | 6400-7000 |
| Cylinders/Engine Configuration | In-Line 6, 24-Valve Direct-Acting Double Overhead Cam (DOHC) |
| Displacement >Cubic Inches (CID) >Liters (L) >Cubic Centimeters (cc) | 158.5 2.6 2,598 |
| Bore & Stroke >Inches (in.) >Millimeters (mm) | 3.23 x 3.23 82 x 82 |
| Induction System | Supercharged with Charge Air Cooling and Electronic Boost Control |
| Fuel System | Computer Controlled Sequential Multi-Port Electronic Fuel Injection (EFI) |
| Fuel Octane Requirements | Unleaded 91 R + M/2 (98 RON) Recommended for Maximum Performance |
| Ignition System | Digital Inductive |
| Charging System | Fully Regulated Belt Driven 70-Amp (882 Watt) |
| Starting | SmartStart Electric |
| Exhaust System | Above Water |
| Cooling System | Water Cooled with Thermostat & Pressure Controlled |
| Lubrication System | Dry Sump |
| Oil Requirement | Mercury Racing NMMA Certified FCWSAE 25W-50 Synthetic Blend |
| Oil Capacity >Quarts (qts.) >Liters (l) | 8.5 8.0 |
| Engine Management System | SmartCraft |
| Engine Control System | SmartCraft Digital Throttle & Shift (DTS) |
| Engine Protection System | SmartCraft Engine Guardian |
| Gear Shift | F-N-R |
| Gear Ratio | 1.75:1 |
| Shaft Length >Inches (in.) >Millimeters (mm) | 15 381 |
| Counter Rotation | Available |
| Trim/Tilt System | Power trim and tilt with remote mounted pump |
| Steering System | External Plate Mount |
| Dry Weight (lbs./kg) ¹ >Pounds (lb.) >Kilograms (kg) | 648 294 |
| Warranty | None |

¹ Dry weight of engine as shipped.

MERCURYRACING.COM **MERCURY**
Racing

FACEBOOK

INSTAGRAM

YOUTUBE

TWITTER